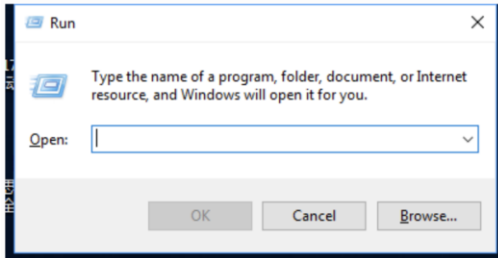


how to use RDP

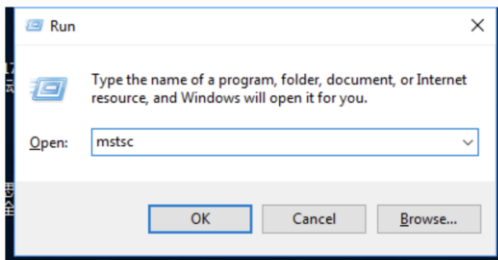
How to use Remote Desktop Connection(RDP)

Posted on 08/18/17 Friday by admin

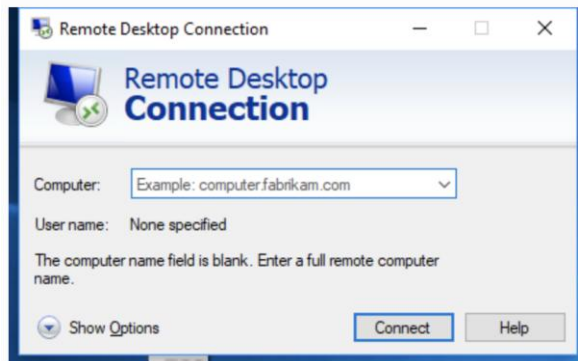
Press "WIN+R" to open run window



Then input "mstsc"

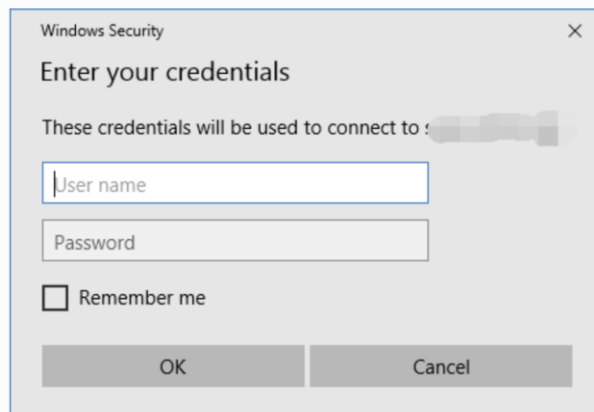


click the "OK" button, then you will see this window



Input the Remote Desktop machine's hostname or IP address, and then click "Connect" button

You will see a window that requires you to input username and password



and then click "OK" button

you can login in the system.